

# Dementia Support Australia

Funded by the Australian Government  
A service led by HammondCare

## Assessment For Eligibility for the Specialist Dementia Care Program



## Every person living with dementia is unique and so are their needs

Sometimes the impact of dementia-related changes in behaviour needs more support than can be provided in a mainstream aged care home or at home. That's when the Specialist Dementia Care Program (SDCP) can help.

## The Specialist Dementia Care Program provides individualised care for people through a national network of specialist dementia care units.

These are specially designed homes that offer a tailored dementia-friendly environment with trained staff who provide person-centred care, and specialised services. The goal of these units is to help the person return to mainstream aged care or to their previous home.

As this is a national service, you are not restricted by the availability of your local SDCP. You can select any provider in the SDCP network that suits your needs. To find the closest SDCP to you, for more information about eligibility and the types of support SDCP can offer, simply visit [dementia.com.au/sdcp](https://dementia.com.au/sdcp)

## How do I access SDCP through an assessment?

Funded by the Australian Government, Dementia Support Australia offers eligibility assessments for the Specialist Dementia Care Program. If assessed as eligible, DSA will refer the person living with dementia to their preferred Specialist Dementia Care Program provider. Following this, the provider will then determine placement. If they are not eligible for placement, we will look at other support options with you.

As part of this process, it's vital to keep the person living with dementia and their family informed and involved in decisions that affect their care. At DSA, we make this a priority. We can start assessment once we have consent from the legally appointed decision-maker for the person's care.

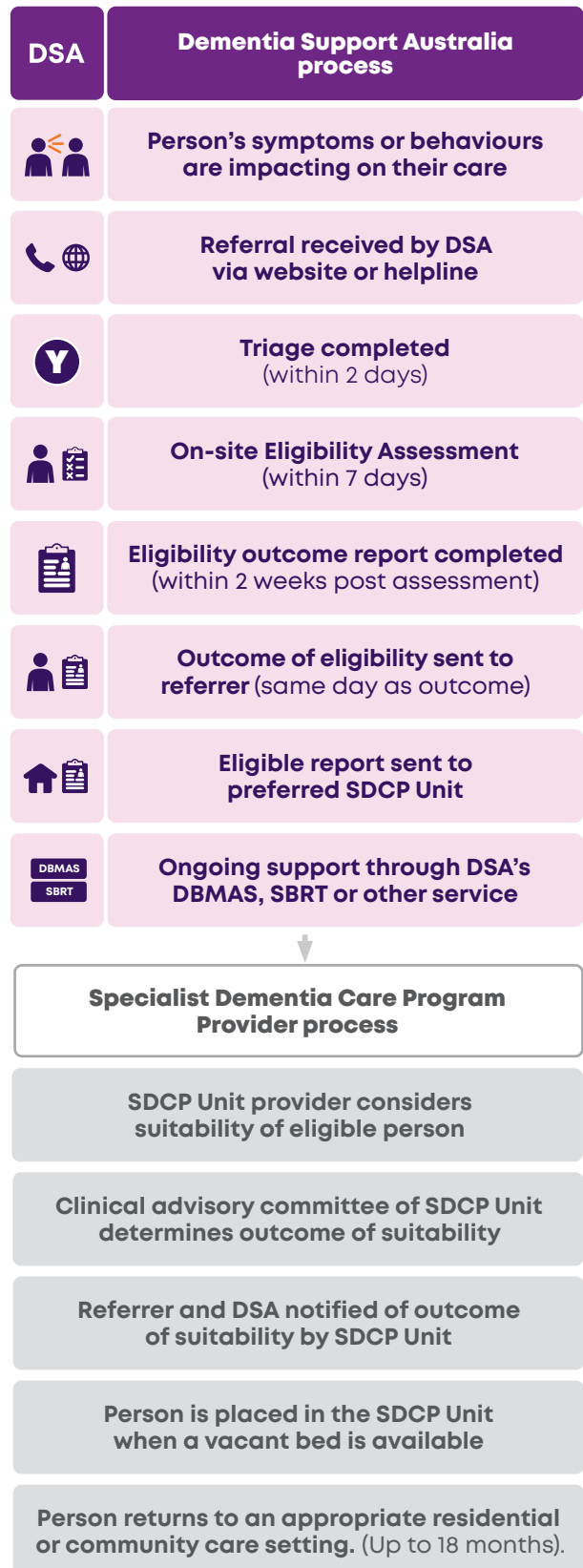
## We can help assess a person's care needs today

If you know or care for someone living with dementia who is experiencing changes in behaviour, our dementia consultants will help you discover whether the Specialist Dementia Care Program is a suitable next step. Simply call our 24-hour helpline or visit our website.

## Find out more

Dementia doesn't follow a set schedule – and neither do we. To find out more about our programs, visit our website.

## Specialist Dementia Care Program eligibility assessment and placement process



Contact us 24 hours, 365 days a year or chat with us online



1800 699 799



dementia.com.au/sdcp

